

**440+/- Pasture/Hay/Row Crop Potential
220th St & Ivy Ave
Worth, MO 64499**



Est. Price: \$4250./ac

Est. Taxes: \$3.77/ac

Est. Total Ac: 440+/-

Est. Tillable Ac: 364.74+/- per EZ156

Directions: Worth, MO West on 220th ST
2 & 3/4 mi to end of 220th rd.
Twp 65N, Rng 32W, Sec 34 **Worth County,**
MO Greene Twp

Est. Income: \$40,000 to \$70,000+/-
Hunting lease \$4500. +/-

Description: Currently in pasture & hay
Including ponds and 364 ac +/- that could be
Row crop farmed. Call 660-582-7160 or
email : property@entrealty.com

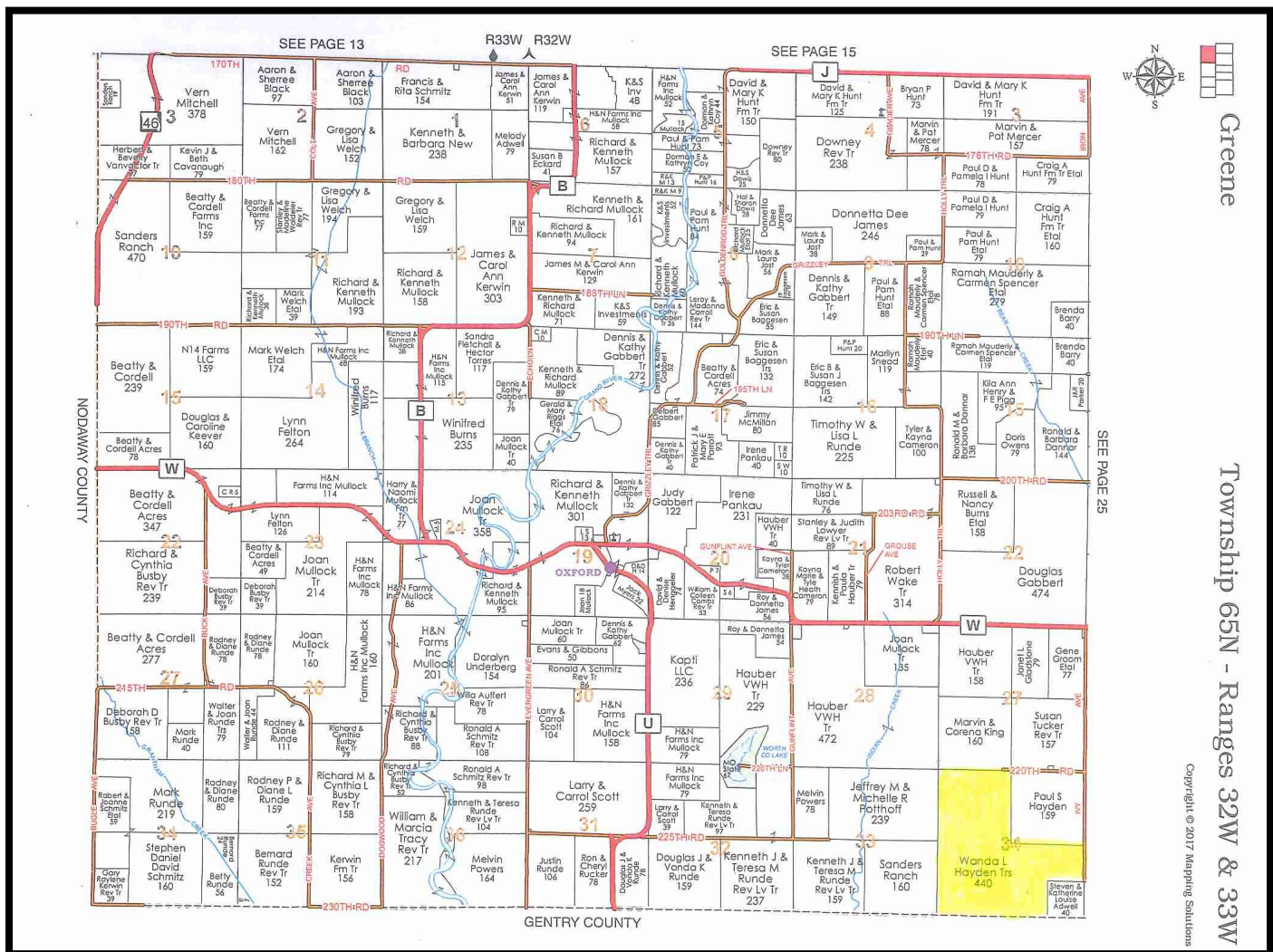


Enterprise Realty & Auction, LLC

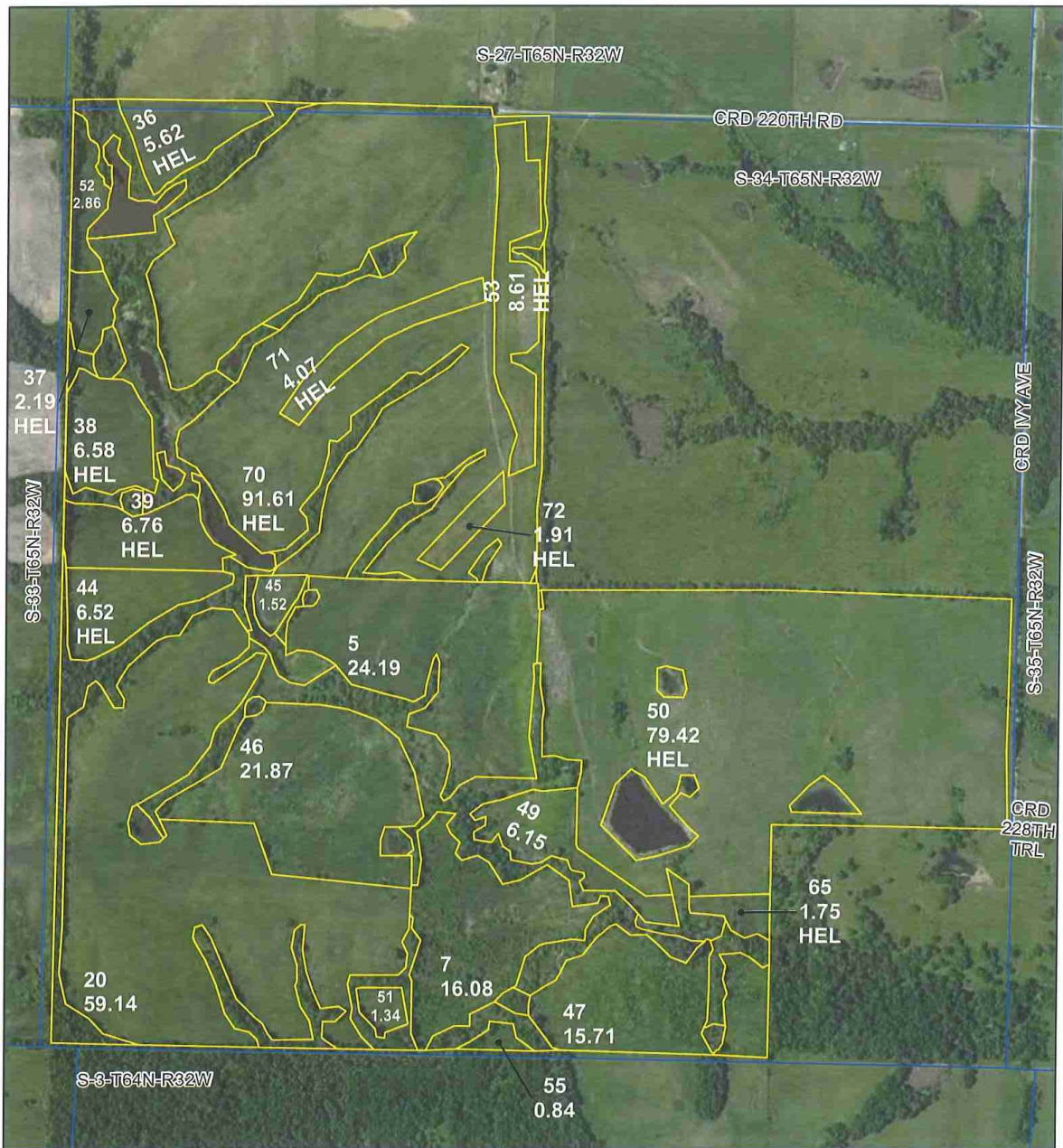
121 E. 4th St.

Maryville, MO 64468

Phone (660) 582-7160 Fax (660) 582-7162
property@entrealty.com www.entrealty.com



Enterprise Realty & Auction, LLC
 121 E. 4th St.
 Maryville, MO 64468
 Phone (660) 582-7160 Fax (660) 582-7162
 property@entrealty.com www.entrealty.com



All Measurements are For FSA Programs Only

- Wetland Determination Identifiers**
- Restricted Use
 - ▼ Limited Restrictions
 - Exempt from Conservation Compliance Provisions

Disclaimer: Wetland identifiers do not represent the size, shape or specific determination of the area. Refer to your original determination (CPA-026 and attached maps) for exact wetland boundaries and determinations, or contact NRCS.

Worth Co. FSA

- C=Corn, Yellow, Grain
- SB=Soybeans, common, Grain
- WHT=Wheat, Soft Red Winter, Grain
- Hay=Mixed Forage, IGS, Forage
- P=Mixed Forage, IGS, Grazing
- ALF=Alfalfa, Forage
- AGM=Mixed Forage, Alfalfa Grass Mix, FG
- GLS=Mixed Forage IGS, Left Standing
- Crops are non-irrigated unless noted

1 inch equals 717 feet

Program Year: 2022

Created: 10/28/2021

Flown: 2020-06-07

- clu
- crp
- plss

**Farm 1839
Tract 5670**



Enterprise Realty & Auction, LLC
 121 E. 4th St.
 Maryville, MO 64468
 Phone (660) 582-7160 Fax (660) 582-7162
 property@entrealty.com www.entrealty.com